



KEAN
CONSTRUCTION



**TOMORROW
BUILT TODAY**

HISTORY



Every construction company is here to build. Kean Construction, is here to build differently and believes in ***Tomorrow Built Today.***

In our historic first chapter, we've established ourselves a strategic niche, one that's allowed us to grow rapidly and sustainably, backed by our experience, expertise and technology.



Kean Construction's parent company has a rich, diverse and successful two-decade journey that spans across construction management, infra works, MEP works, real estate and Lock-N-Key domains along with marble processing, warehousing, stone crushing and real estate. Now, promoted by a leading second-generation entrepreneur,

Kean is here to reimagine the Mumbai skyline

from the ground up, through innovative construction techniques that are committed to safety, quality and timely completion. Not just for residential or commercial developments but incomplete, greenfield and redevelopment projects too. With our ingenious approach and infinite passion for construction, we are building the future, the way it should be.

**TOMORROW
BUILT
TODAY**

O U R V I S I O N

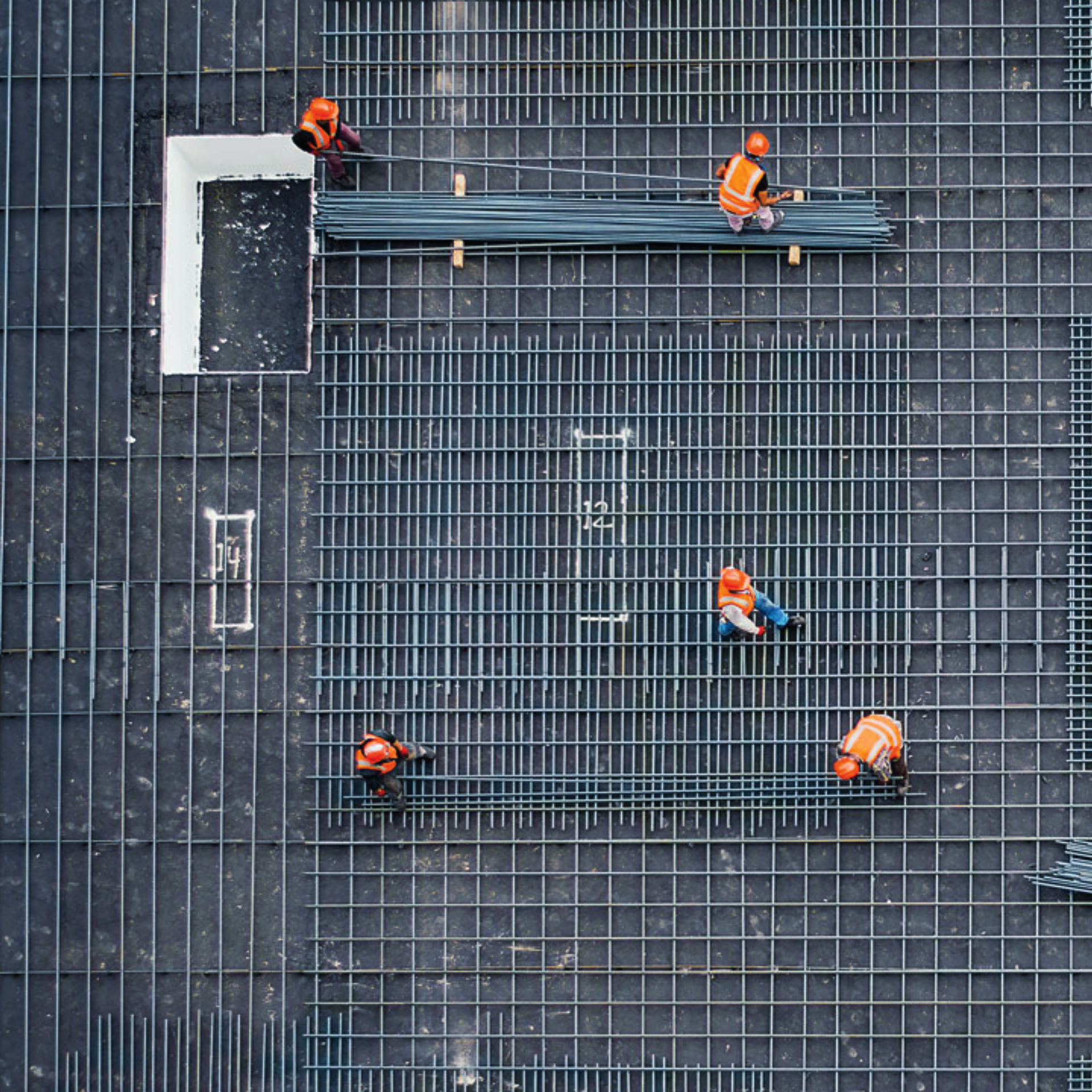


To go beyond in everything we do, and become an industry leader across every real estate sector, by setting the ***standards for excellence, in our passion-driven purpose*** and our world-class leading practices.

OUR MISSION



To deliver an unparalleled customer experience through ***intelligent, high quality services;*** brought to life by a company culture of empowerment, collaboration and our values.



OUR VALUES



Trust

We are committed to building trust across our organisation, with our customers or our own and by ensuring we act collaboratively and with transparency.

Timelines

We are dedicated to timely project management and delivery in keeping with our stakeholder-first approach.

Tech

We believe in tech-integrated systems, processes and machinery, allowing us to provide seamless, end-to-end construction solutions.

True Passion

We do everything with an unstoppable passion driving every action, enabling us to deliver superior services.



OUR SKILLS & EXPERTISE



We've built our name on a powerful mix of experience, skill and expertise. Having many successful large-scale project executions to our name, a reputation with the Mumbai real estate market and the right tools and technology to select high-value developments and deliver them on time.

Skills:

- Excellent liaison support with Government authorities
- Sourcing high-quality materials
- Sourcing local labour
- Expediting approvals through expert advice
- Support in shortlisting contractors
- Decades of experience and technical know-how
- Strong liaison background
- Fundraising expertise
- Local support for projects in execution



Expertise:

Tunnel Formwork

When it comes to choosing the right construction method for your project, there are a lot of factors to consider, but one of the most important is the formwork system you'll use. There are many different formwork systems on the market, but one of the most popular is the tunnel formwork system. This system has a number of advantages over other methods and at Kean, we're experts in providing the best possible tunnel formwork solutions for your needs.

- Globally sourced technology
- Crane availability
- Hi-tech all-steel 3mm system with a service life of 500 reuses
- Fully self-climbing systems for structures reaching 50 storeys or more
- Push-pull props for easy adjustment
- Rollers for easy stripping
- Elevated bottom tie-rod level for higher kicker concrete
- Extension tunnel legs for non-typical floors
- Stripping platform extension leg for non-typical floors
- Steel panel surface for a smooth concrete finish
- Dimensional accuracy with features that eliminate finishing works like plastering

These features and services mean that the tunnel formwork solutions we provide ensure more efficiency, reduced costs, greater strength, improved quality and increased safety.



OUR SERVICES

Construction Management

Our approach to construction management is holistic, implemented through a fivefold systematic model that aligns key objectives and ensures everything from planning and procurement to engineering, building and sales are all streamlined for success.

- 01.** Design and development
- 02.** Value engineering and feasibility calculations
- 03.** Planning and coordination
- 04.** Procurement and tendering
- 05.** Installation and project management
- 06.** Inspection, testing and commissioning





Turnkey Projects

Interiors of all types of projects, residential, commercial, and industrial, have seen explosive growth in the last decade. This is due to the fact that clients and developers are now much more customer-centric and interested in the finished product being of the highest quality. As a result, the interior of a project has become extremely important. We are confident that our Design+Build Concept, as part of our newly formed branch for turnkey solutions, will provide our clients with a better understanding of their project and enable them to make more informed decisions.

01. Moodboard Presentation – 2D design of the interiors of each room with material specification and colour understanding.

02. 3D Views – A 3-dimensional view of the different finishes, interiors, decorations, carpentry furniture and wall colours.



Actual photo of Piramal Dhobighat site.



O U R P R O J E C T S

We have a wide range of projects under our belt and there's none that we can't handle. From residential construction projects like high rise towers and super high rise structures to residential townships and commercial areas like gray day office buildings, corporate parks, and arenas, ***Kean has done it all.***

We are also experienced in industrial complex construction, including warehouses, cold storage facilities, manufacturing workshops, and industrial parks, plus ***with an eye for luxury,*** we have also executed some of the top uber luxury interior works in the city of Mumbai. But our projects don't stop there, the company has also pioneered in large scale infrastructural works like jetties and road works. Plus, with our specialised MEP, we are capable of executing extremely complex MEP works for 69 storey high-rise towers, heavy industrial units, and hospitals.

COMPLETED PROJECTS

Client: L&T Realty and Omkar Realtors & Developers

Project: Crescent Bay

Location: Bhoiwada, Mumbai

Tower/Building: Rehab B+G+40

Scope of work: Lock-N-Key

Construction area: 7,05,030 sq. ft.



Client: Aesthetic Builder & Developer

Project: Gardina

Location: Santacruz, Mumbai

Tower/Building: Sale Building (G+13)

Scope of work: Lock-N-Key

Construction area: 40,900 sq. ft.



Client: Piramal Realty and Omkar Realtors & Developers

Project: Piramal Mahalaxmi

Location: Dhobghat, Mumbai

Tower/Building: Rehab - B+G+42, (2 towers Completed & 2 towers Ongoing)

Scope of work: Lock-N-Key

Construction area: 16,68,400 sq. ft.





Client: Piramal Realty

Project: Revanta

Location: Mulund

Tower/Building: B+G+19

Scope of work: Civil contract

Construction area: 93,000 sq. ft.



O N G O I N G P R O J E C T S

Client: ERA Realtors

Project: Alta Monte

Location: Malad, Mumbai

Tower/Building: Sale building (G+8P+53)

Scope of work: Lock-N-Key

Construction area: 20,45,140 sq. ft.





Client: ERA Realtors

Project: Signet

Location: Malad, Mumbai

← **Tower/Building:** Sale Building (2B+G+33)

Scope of work: Lock-N-Key

Construction area: 6,29,690 sq. ft.

Client: Rustomjee Group

Project: Ozone PG

Location: Goregaon, Mumbai

Tower/Building: 1 tower (G+40) →

Scope of work: Lock-N-Key

Construction area: 3,33,680 sq. ft.



Client: L&T Realty

Project: Centrona

Location: Ghatkopar, Mumbai

← **Tower/Building:** Sale building - 3 towers (3B+G+26)

Scope of work: Civil contract

Construction area: 15,06,950 sq. ft.



Client: Jangid Group
Project: Elysium Rehab
Location: Borivali East
Tower/Building: B+G+36
Scope of work: Civil contract
Construction area: 6,24,300 sq. ft.



Client: Joy Builders
Project: Joy Legend
Location: Khar West, Mumbai
Tower/Building: Sale Building
 2 towers (3B+G+19)
Scope of work: Lock-N-Key
Construction area: 3,60,590 sq. ft.



Client: Aryamaan Developers
Project: 77 Crossroads Rehab
Location: Ghatkopar, Mumbai
Tower/Building: 2 Towers (G+36)
Scope of work: Civil contract
Construction area: 5,22,050 sq. ft.



Client: DK Realty
Project: Livsmart
Location: Kurla, Mumbai
Tower/Building: 28 Sale
Building (3B+G+14)
Scope of work: Lock-N-Key
Construction area: 17,22,225 sq. ft.



Client: D&A Realty
Project: West Shore
Location: Bandra, Mumbai
Tower/Building: Sale Building - 1 Tower
(2B+G+11P+23)
Scope of work: Civil contract
Construction area: 3,98,264 sq. ft.



Client: L&T Realty
Project: Panvel Phase 1
Location: Panvel, Navi-Mumbai
Tower/Building: Sale Building -
5 Tower (B+G+2P+33)
Scope of work: Civil contract
Construction area: 27,01,741 sq. ft.



KEY ADVISOR



The group is headed by **Mr. Rajendra Varma** who is a 2nd generation entrepreneur with an experience of over 2 decades in the Construction & Real Estate Industry. He has been an instrumental leader in bringing in the brightest minds across the globe for working on projects in Mumbai. With a keen sense to explore new technologies and working with the best practices, Mr. Varma was instrumental in partnering in with top Indian & global consultants and designers for his ideas. Through this business acumen, the group has evolved & now have a presence in Construction, Real Estate, Marine Infrastructure & the Manufacturing space.

GROUP COMPANIES ABOUT EARTHEN PEARL



Started in 2014, Earthen Pearl has been pioneering the way forward in the country's marble industry. After sourcing from various European countries, we process and produce the highest quality stones at our 6-acre processing plant in Gujarat with a capacity to process over 6.5 Mn Sq.ft. Our expert teams comprise of the most knowledgeable minds, experienced hands and passionate spirits. Together, we deliver extraordinary stones, crafted with care and acumen, that fulfil every design functionality or indulgence. From small residential apartments to large hospitality ventures and from commercial lobbies to complete building projects, your stone is our command.

Embedded in our name, is our identity. Earthen Pearl. A name that reflects what we do, just as much as the pride and mindfulness with which we do it.

GROUP COMPANIES ABOUT KARGWAL



Since 2007, the Kargwal Group has been pioneering integrated engineering and construction solutions across India. It was founded by Mr. M.H. Varma, a visionary businessman who started out as a small-time contractor in a town of Gujarat. The company partners with several Government Authorities and stands as the most trusted name for the country's growing specialty and technically challenging infrastructure development needs across the marine & real estate sectors. Today, we have evolved into a specialized player in Marine infrastructure and Construction.

Specialty infrastructure projects such as ports, bridges, industrial plants and townships in Cochin, Gujarat (Kandla), Goa and various other states require extraordinary levels of expertise and craftsmanship to deliver complex works of engineering. With an experienced team of professionals, we strive to break the boundaries of what is possible. We understand the importance of getting the job done right the first time, and our commitment is to ensure that all our clients are satisfied with our services. With a keen focus on safety, quality, efficiency and innovation, we aim to unlock new horizons in infrastructure.



KEAN
CONSTRUCTION

Tomorrow Built Today