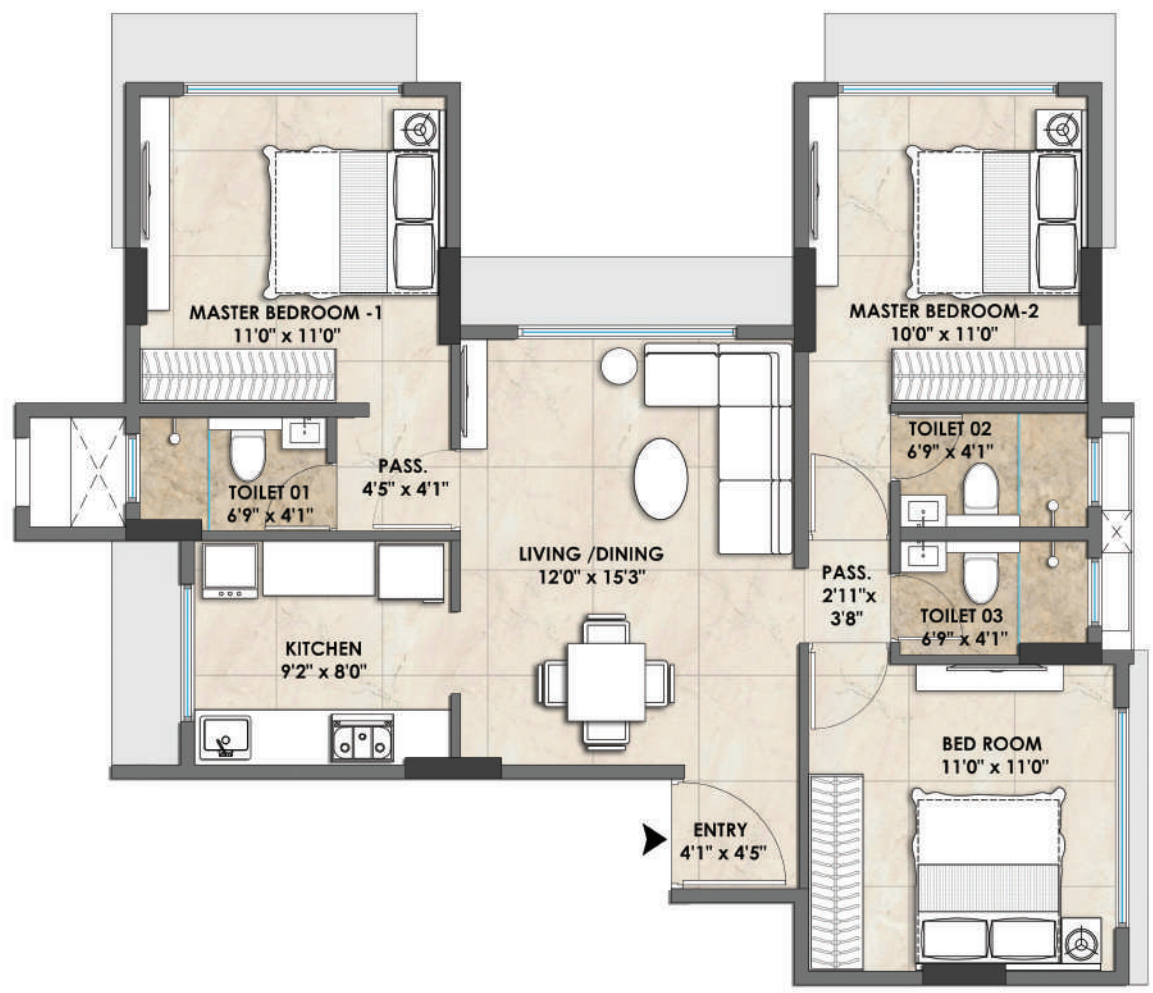
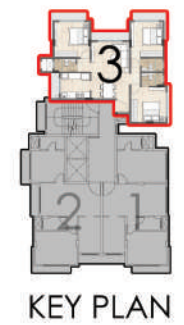


A decorative floral pattern in a light beige color, featuring a central stem with several leaves and a small flower-like element, positioned on the left side of the tan horizontal band.

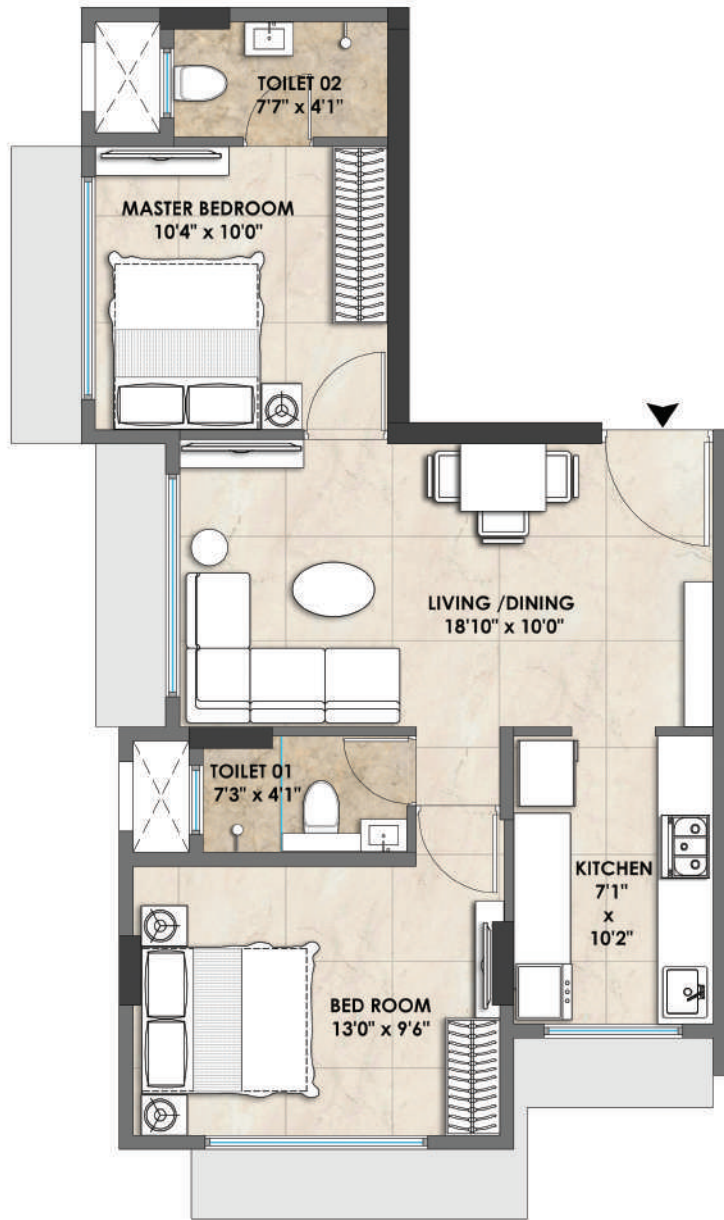
The Unit Plans



303 Unit Plan



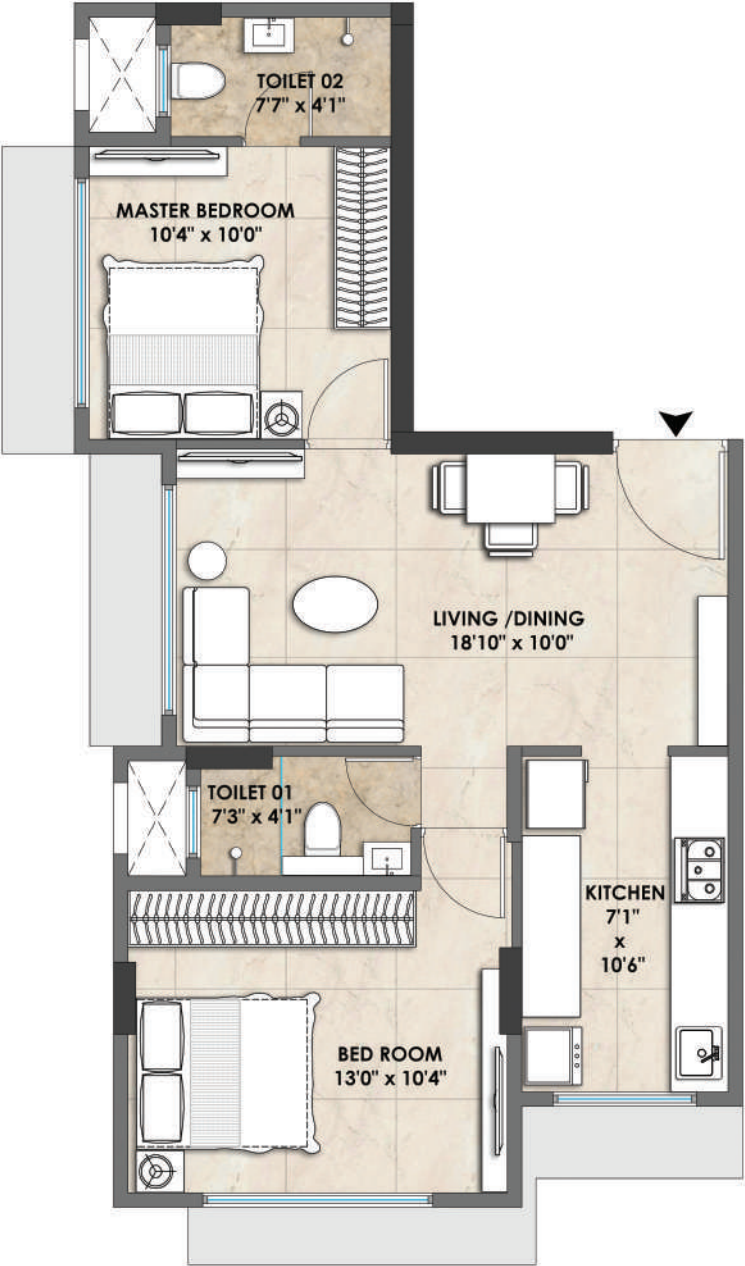
KEY PLAN



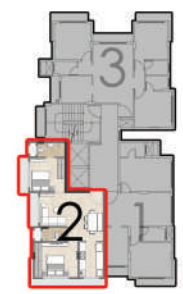
602 Unit Plan



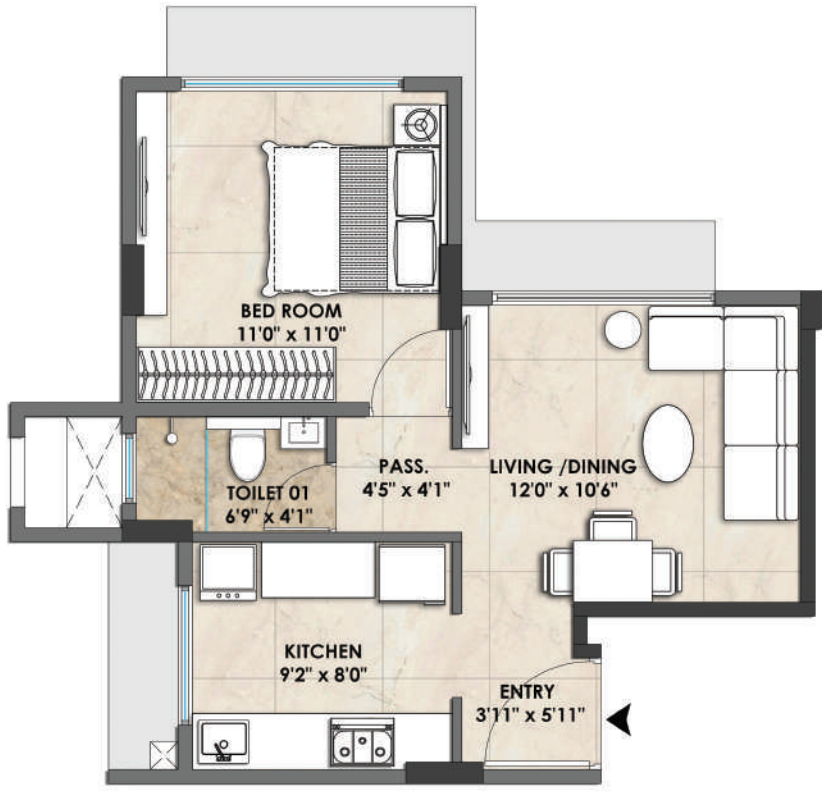
KEY PLAN



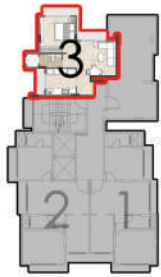
802 Unit Plan



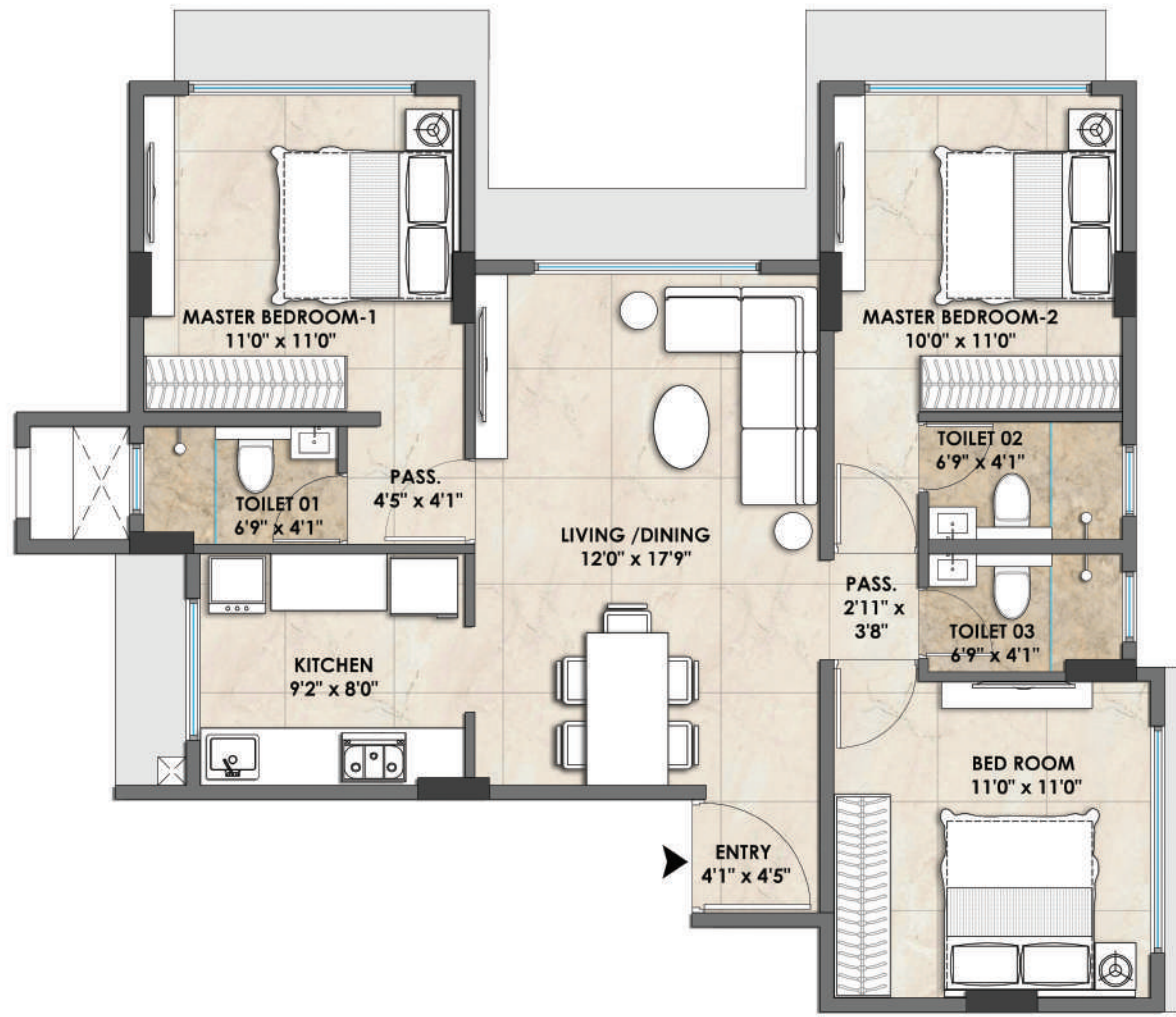
KEY PLAN



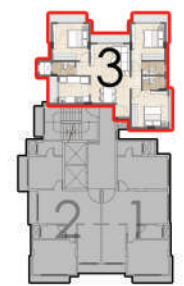
803 Unit Plan



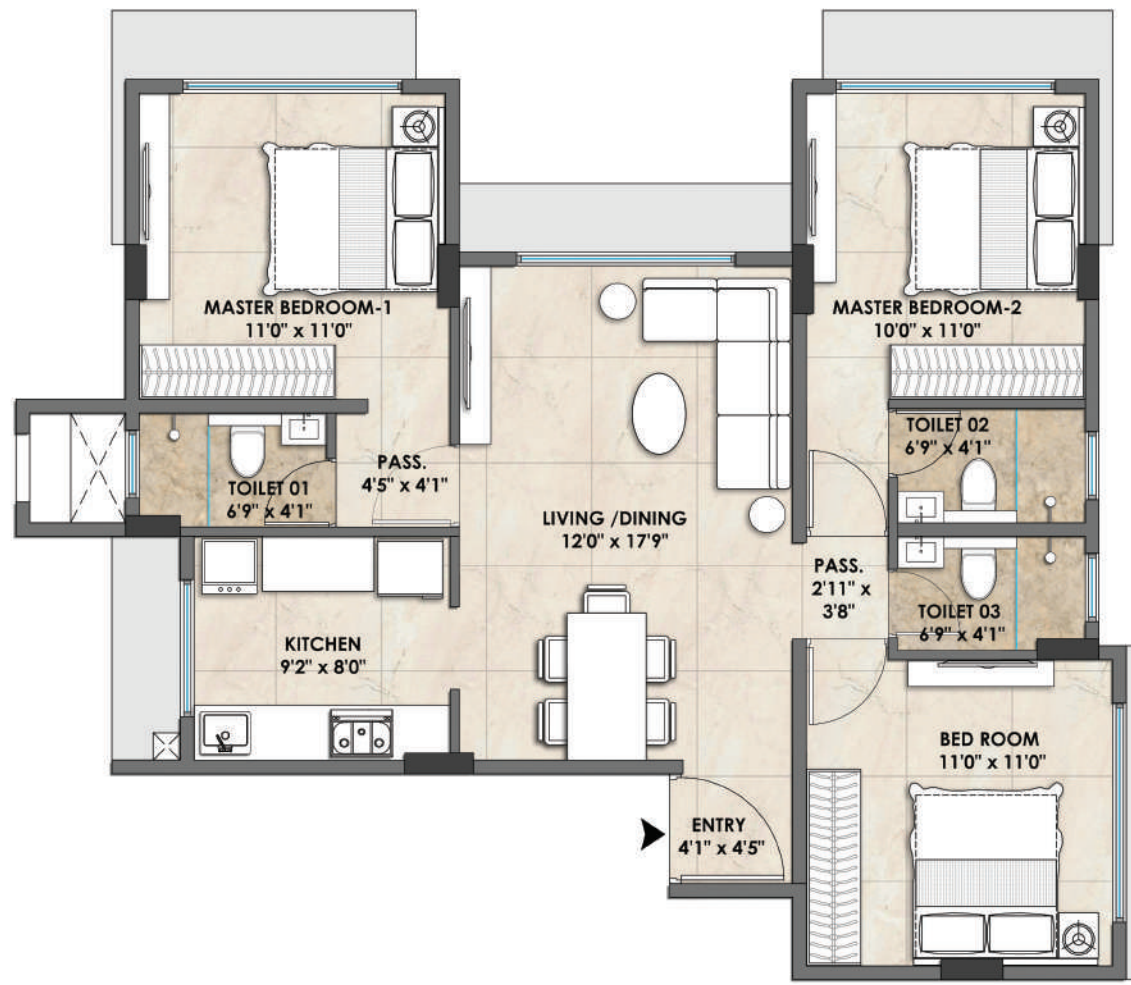
KEY PLAN



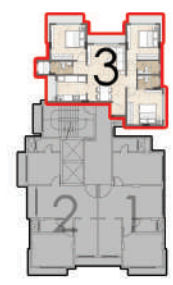
1003 Unit Plan



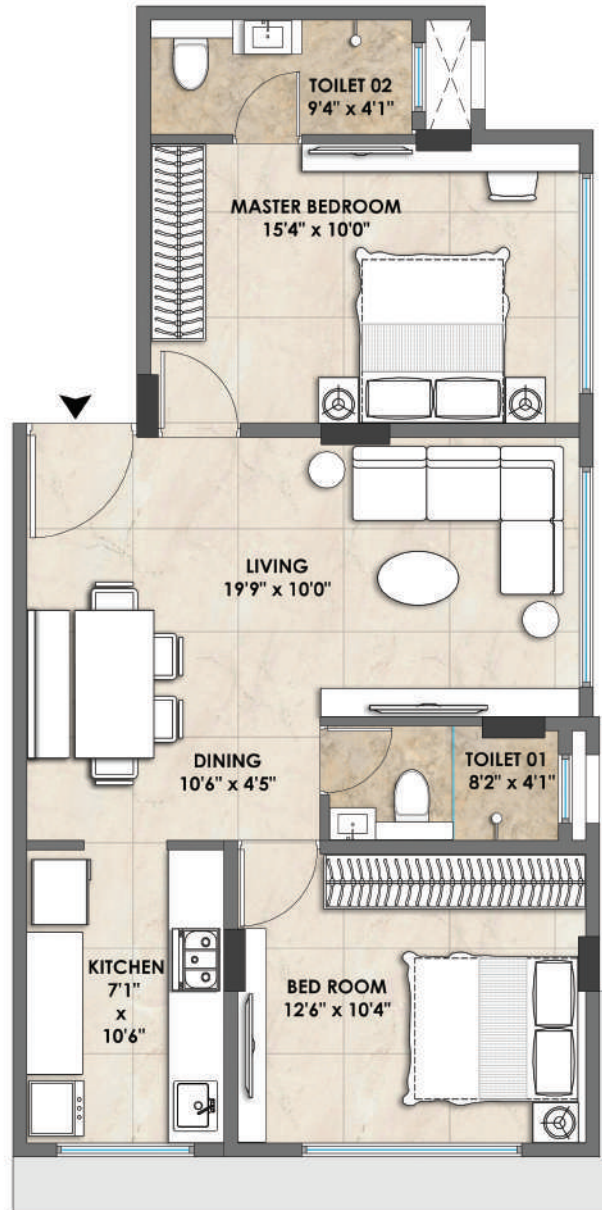
KEY PLAN



1103 Unit Plan



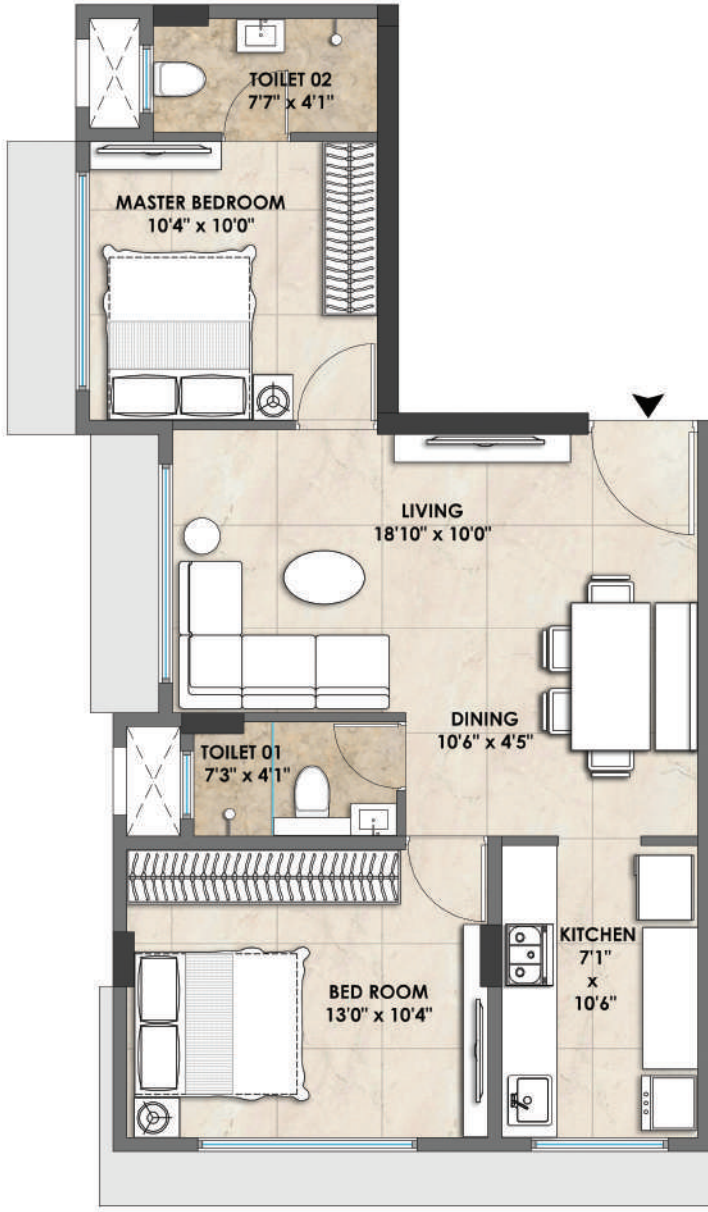
KEY PLAN



1301 Unit Plan



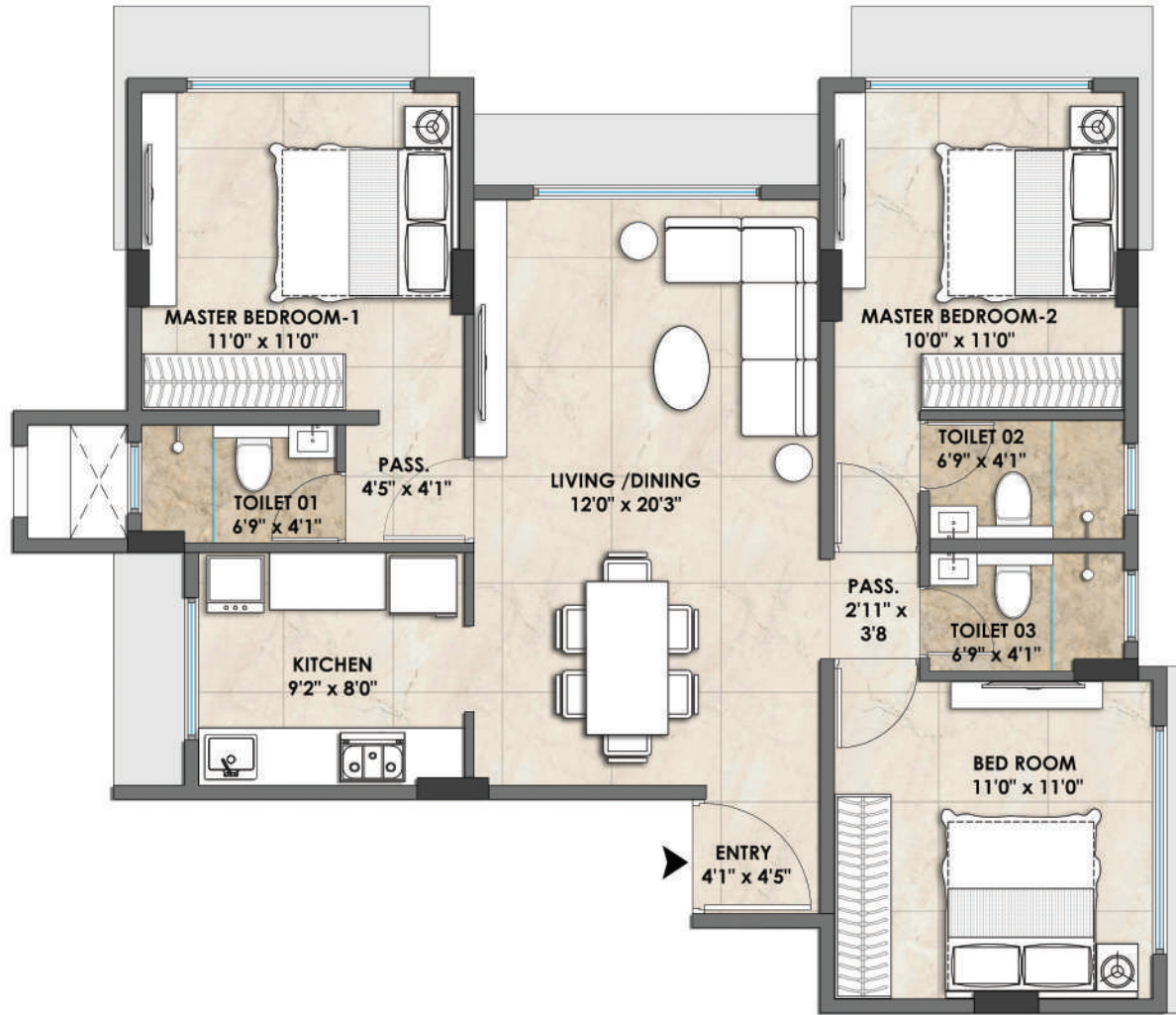
KEY PLAN



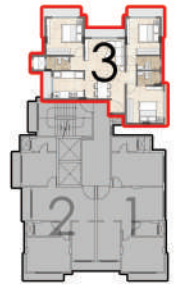
1302 Unit Plan



KEY PLAN



1303 Unit Plan



KEY PLAN