



GARDINA

SANTACRUZ

PROJECT BY :



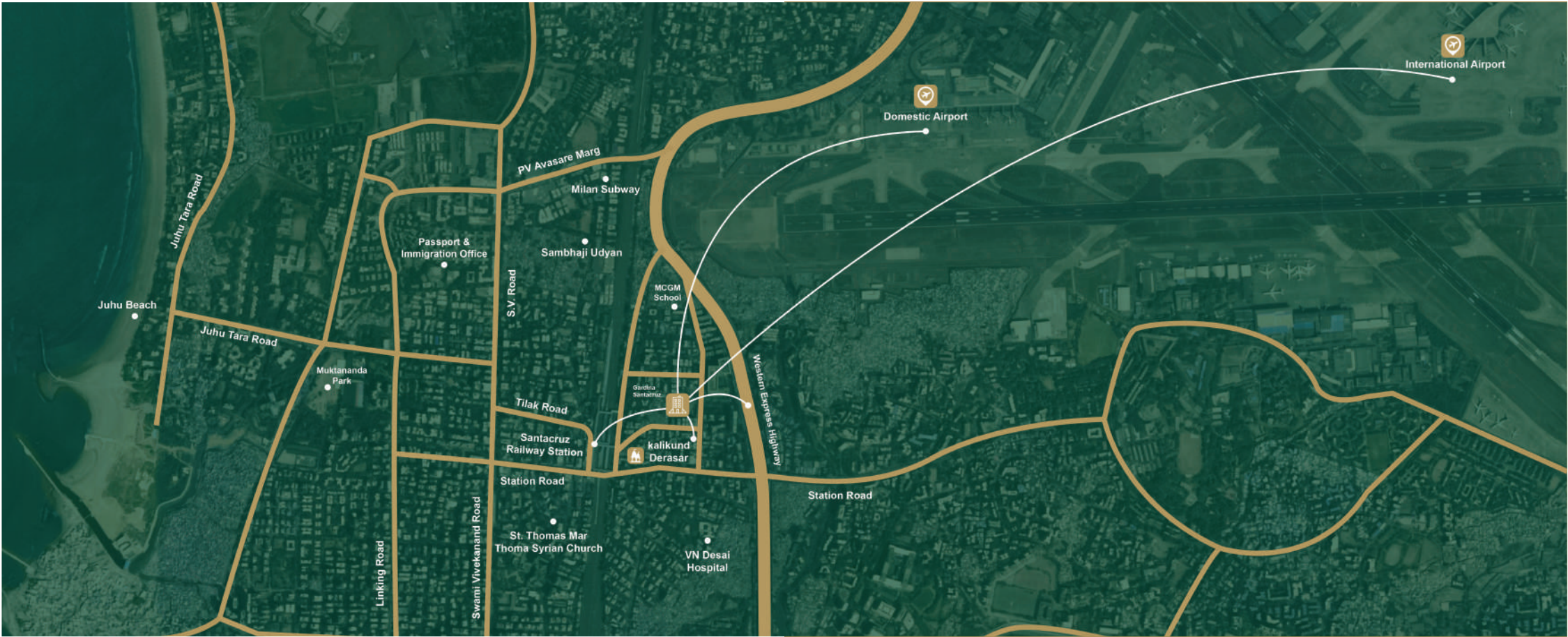
Aesthetic
Builders & Developers

Construction Partner:
KEAN
Construction




Artist's Impression

An Address Supremely
Lavish
& High On Contemporariness



GARDINA
SANTACRUZ

Easy Connectivity

-  200 Meters from Santacruz Railway Station
-  450 Meters from National Highway No: 8
-  3.5 KM from Domestic Airport
-  5.75 KM from International Airport
-  10 minutes away from Bandra Kurla Complex
-  Only minutes away from Orion Mall and Multiplex
-  Kalikund Derasar at a walking distance



Well Designed
Entrance Foyer
& Lounge Area

Artist's Impression



GARDINA
BY
KEAN

Artist's Impression

Airport Connectivity

- ◆ International Airport 15 Minutes Drive
- ◆ Domestic Airport 10 Minutes Drive



Stock Images

Neighboring Hotels

- ◆ Grand Hyatt
- ◆ Genesis Resorts
- ◆ Hotel Sahara Star
- ◆ Trident
- ◆ Sofitel



Close by Educational Institutions

- ◆ Panbai International School : 750m
- ◆ Podar International School : 1.3km
- ◆ St. Charles High School : 2.1km
- ◆ Public High School & College : 2.4km
- ◆ Air India Modern School : 3.7km
- ◆ Kalina University : 3.7km
- ◆ NMIMS College : 4km



Proximity of Hospitals

- ◆ V N Desai Hospital : 1.2km
- ◆ Nanavati Hospital : 2.4km
- ◆ Asian Heart Institute : 4.3km
- ◆ Lilavati Hospital : 7.2km



Comforts That Welcome Ultra Modern Life

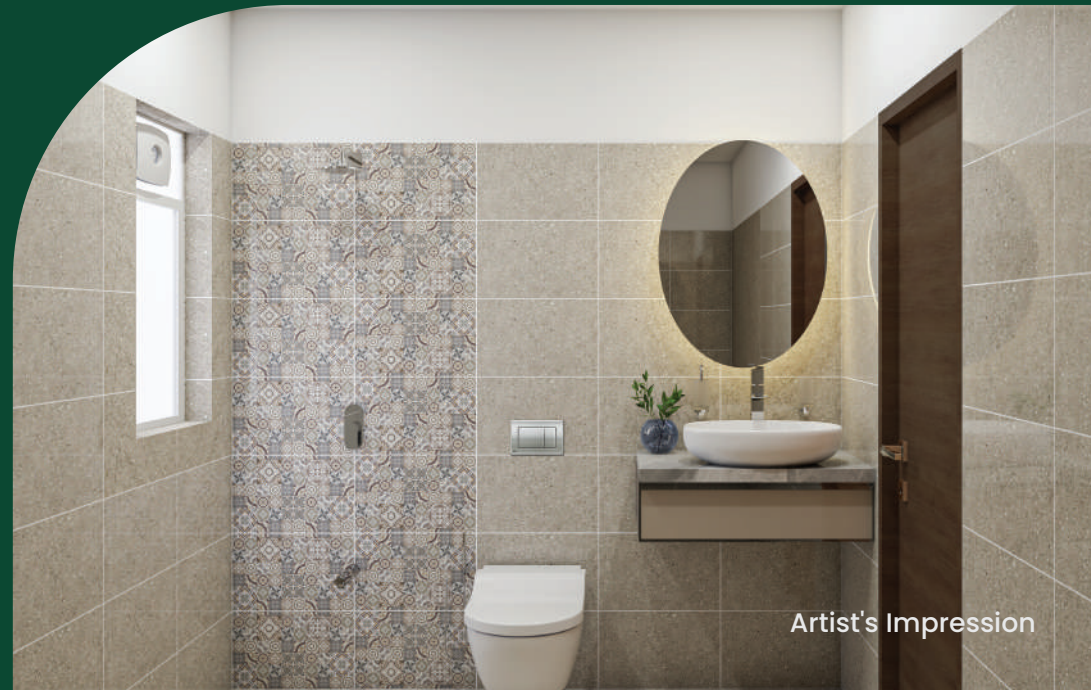
Contemporary Living, Comfort, Mood And Style. Gardina By Kean Is An Ideal Home For People Of This Ultra-Modern Era.

Amenities Includes :

- ◆ Entrance Lobby With High Ceiling And Italian Marble Flooring
- ◆ High Speed Elevators
- ◆ Main Door With Secured Digital Locks, Video Door Phone System & Intercom Facility
- ◆ CCTV In Selected Common Areas
- ◆ Terrace Deck With Recreational Space



Artist's Impression



Artist's Impression

- ◆ Entire Flat Is Well Painted With Branded Acrylic Paint Of High Quality
- ◆ Imported Marble Flooring
- ◆ Glazed And Anti Skid Tiles In Bathroom
- ◆ Modular Kitchen With Black Granite Platform





Artist's Impression

The Ultra Modern
Living



Artist's Impression

Design Excellence with
Blend
of Style & Functionality



Artist's Impression

Terrace Deck

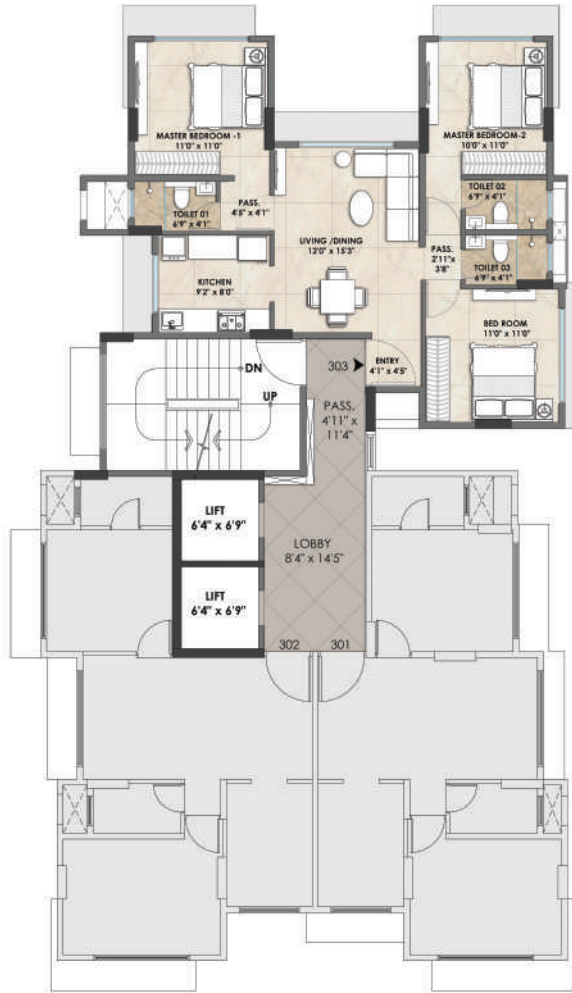
That Defines
Ultra Modern
Living

Artist's Impression



A decorative floral pattern in a light beige color, featuring a central stem with several leaves and a small flower-like element, positioned on the left side of the tan horizontal band.

The Floor Plans



3rd Floor Plan

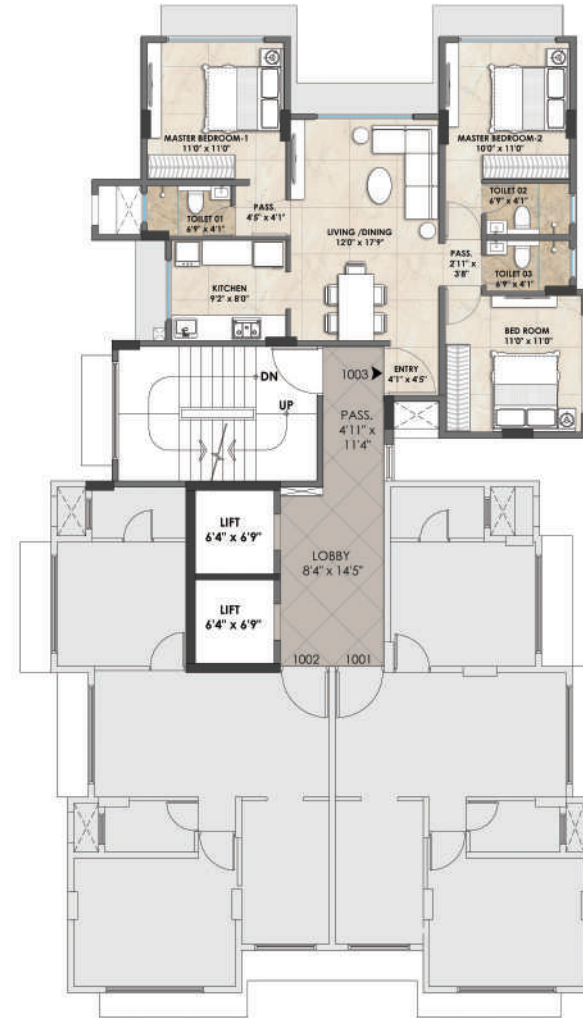


6th Floor Plan





8th Floor Plan



10th Floor Plan





11th Floor Plan



13th Floor Plan



Isometric Mockup



Unit 1301



Unit 1302



Artist's Impression



GARDINA

SANTACRUZ

Disclaimer

The Amenities, Specifications, Facilities, Surrounding Infrastructure & Features Shown And The Image Renders Used Here In Are Purely Indicative And For Representational Purpose & May Differ From Actuals. The Same Are Subject To The Approval Of The Respective Authorities.

PROJECT BY :



SITE: Gardina Road No. 3, Sen Nagar, Near Kalikund Derasar, Santacruz (East), Mumbai - 400055

OFFICE: 24th floor, Sunshine Tower, Senapati Bapat Marg, Prabhadevi (Parel) West, Mumbai - 400013

FOR BOOKING : +91 8424006006

MAHA RERA NUMBER : P51800012226

Construction Partner :

KEAN
Construction